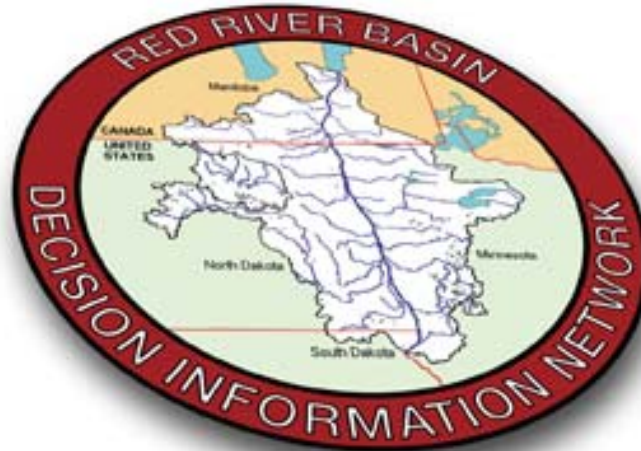


Red River Basin Decision Information Network



Presented by:

Brian C. Fischer, Houston Engineering, Inc.

Mark R. Deutschman, Ph.D., P.E., Houston Engineering, Inc.

Presented to:

2003 MapServer Users Meeting

St. Paul, MN

Overview

- Background Information about Red River Basin Decision Information Network (RRBDIN)
- Overview of MapServer Application termed “BasinViewer”
- Technology used to Develop “BasinViewer”
- Live Demonstration of “BasinViewer”
- Conclusions and Questions



What's New

Download the [Red River Canoe and Boating Route Master Plan](#) and related maps and pictures from the [File Bank](#). (02/30/03)

Two new tools are available, called BasinViewer and DataViewer. Go to the [Tools Page](#) and click on the appropriate link. (11/04/02)

Current Flood Conditions

For more information go to:
[DataViewer](#)
[National Weather Service](#)
[Manitoba Flood Information](#)
[MN DEM](#)
[ND DEM](#)

Visit [RiverWatch](#) for Flood Recovery Information.



The Red River Basin Decision Information Network (RRBDIN) is an internet-based decision support system for the Red River Basin. RRBDIN provides a one-stop portal to information about water management within the basin. This information includes databases, references, technical tools, communication tools and GIS data. [Click for project background.](#)

Basin News

2003-04-08

Final Devils Lake Environmental Impact Statement Released

The U.S. Army Corps of Engineers released its Devils Lake, N.D., final Integrated Planning Report and Environmental Impact Statement for public comment on April 8.

[Full Story](#) ➔

2003-04-03 -- [\\$160 Million Announced for Floodway Expansion](#)

2003-03-31 -- [Final Payments Announced for 1995, 1996 Manitoba Floods](#)

2003-03-28 -- [Flood Potential in Western Manitoba Diminishes](#)

2003-03-25 -- [MN Governor Announces \\$7 Million+ in FEMA Grants](#)

2003-03-24 -- [Minnesota Spring Fire Restrictions to Begin April 1](#)

2003-03-13 -- [Meteorological Service of Canada to be Reorganized](#)

2003-03-03 -- [FEMA Establishes Interagency Geospatial Team](#)

2003-02-28 -- [Minor Spring Flooding Possible in Western Manitoba](#)

2003-02-26 -- [Corps Identifies Preferred Outlet for Devils Lake](#)

2003-02-18 -- [Province Announces Lake Winnipeg Action Plan](#)

2003-02-17 -- [Manitoba Freshwater Forum Takes Place February 18th](#)

2003-02-10 -- [USGS Releases New Software for Estimating Floods](#)

[News Archive](#) ➔

Featured Link

[Manitoba Land Initiative](#)

[USDA Disaster Assistance Website](#)

[Join the mailing list!](#)

[Invite a Friend!](#)

Search RRBDIN

Search

In Cooperation With

Manitoba 





Background of the Red River Basin Decision Information Network

What is the RRBDIN?

- Web-Based Decision Support System for Water Management in the Red River Basin of the North
- Funded by the U. S. Army Corps of Engineers and International Joint Commission
- Consists of interactive databases, communication tools, **mapping and data access tools**, and other related information
- Evolving work in progress
 - Two funding phases with a third to begin this summer



"Shared Tools For Regional Problem Solving"

[HOME](#) | [ABOUT THE BASIN](#) | [DATA](#) | [TOOLS](#) | [COMMUNICATION](#) | [SEARCH](#) | More Information →

[Communication](#) > Address Book

Address Book

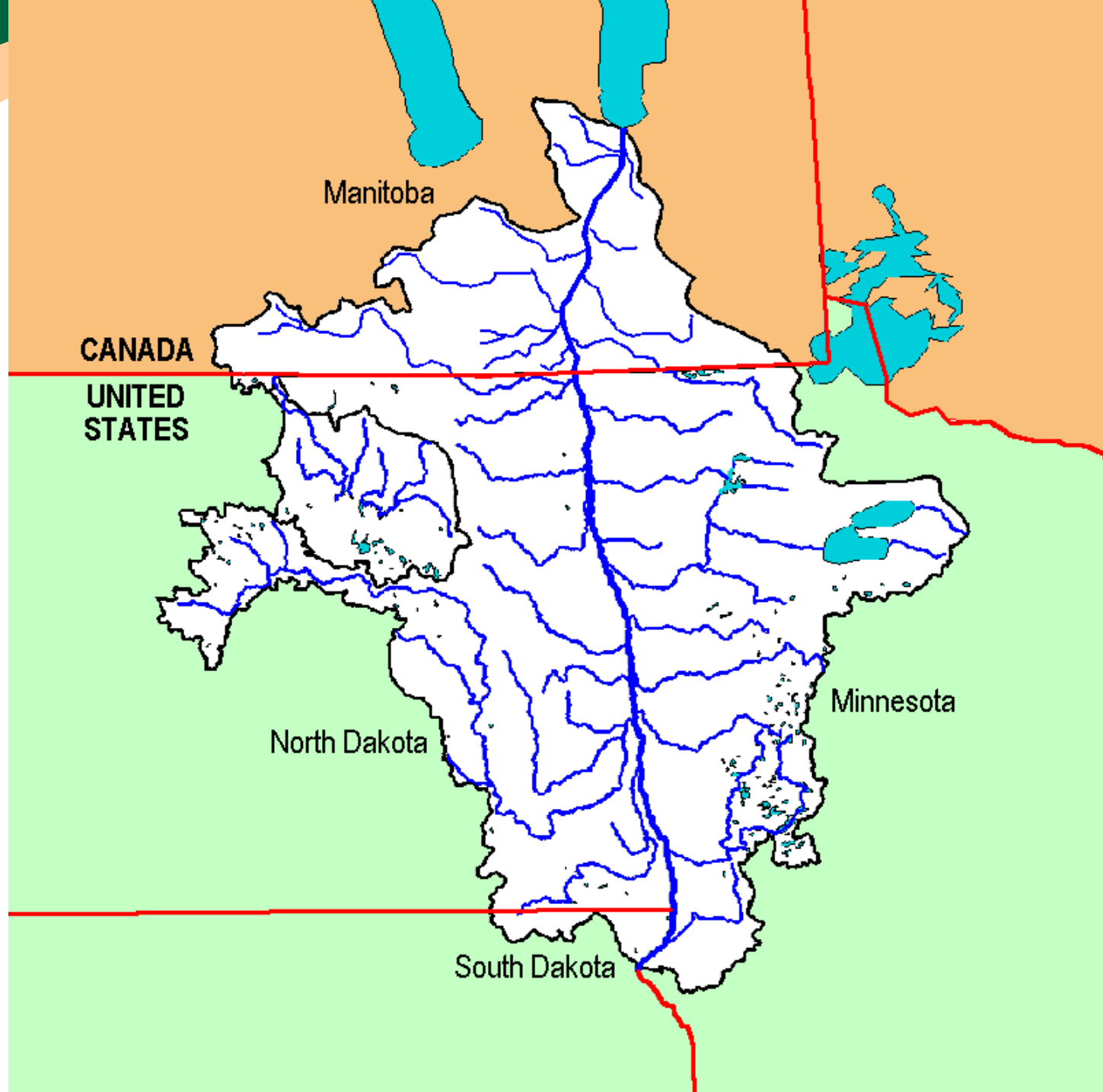
[Browse](#) | [Review](#) | [Help](#)

[A](#) [B](#) [C](#) [D](#) [E](#) [F](#) [G](#) [H](#) [I](#) [J](#) [K](#) [L](#) [M](#) [N](#) [O](#) [P](#) [Q](#) [R](#) [S](#) [T](#) [U](#) [V](#) [W](#) [X](#) [Y](#) [Z](#)

| Name/Title | Organization/Address | Phone |
|---|---|--------------------------------------|
| <input type="checkbox"/> Adrian, Ronald J. Engineer  | Middle River Snake River Watershed District P.O. Box 154, 453 North McKinley St. Warren, MN 56762 USA | 218-745-4741 (W) 218-745-5300 (F) |
| <input type="checkbox"/> Alberico, Teri Biologist/GIS Specialist  | <u>U.S. Army Corps of Engineers, St. Paul District</u> <u>Environmental and Economic Analysis Branch</u> 190 Fifth St. East St. Paul, MN 55103 USA | 651-290-5269 (W) 651-290-5258 (F) |
| <input type="checkbox"/> Albrant, Kelly Water Resources  | <u>Northland Employment Services, Inc.</u> Interchange Building, Ste. 450 400 South Highway 169 St. Louis Park, MN 55426 USA | 952-345-7115 (W) 952-595-9878 (F) |
| <input type="checkbox"/> Albright, Bruce E. Administrator  | Buffalo-Red River Watershed District 123 Front St. Barnesville, MN 56514 USA | 218-354-7710 (W) 218-354-2503 (F) |
| <input type="checkbox"/> Alexander, Donald Chairman  | <u>Pembina Valley Conservation District</u> Box 148 Miami, MB R0G 1H0 CAN | 204-435-2484 (W) 204-435-2385 (F) |
| <input type="checkbox"/> Alleckson, Lorilynn | (n/a) | 218-790-5793 (W) |

Last Name

**Where is
the
Red River
Basin
Of the
North?**



**Flood of 1997
Red River of the North**



Emerson - International Border

Original RRBDIN Purposes

- Provide access to multi-source information in support of floodplain management goals
- **Establish a geospatial data framework for the Red River Basin**
- Make data freely available to solve local problems
- Serve as a test-bed environment to benefit other emergency management interests
- Foster international cooperation
- Strengthen inter-organizational ties

BasinViewer

RED RIVER BASIN
DECISION INFORMATION NETWORK
"Shared Tools For Regional Problem Solving"

Turn on/off GIS Layer...

Map Layers

- Overlay Layers
 - Water Features
 - Watershed Boundaries
 - Transportation
 - Political Features
 - Flood & Water Management
 - Ecological
 - Water Quality
 - Emergency Response
- Background Layers
 - Aerial Photos (MN)
 - USGS Topo Quads (MN)
 - Landuse/Landcover
 - Shaded Relief Image
 - Landsat7 Images

Refresh Map

Map Options
Map Size: Small

[Help Files](#)

[View Legend](#)

[Home Page](#)

Zoom to Watershed... Zoom to Scale: Zoom

Overview Map

Latitude= 47.5088°N Longitude=-96.9369°W || UTM 14 NAD83: x=655348 and y=5263770

Need for a Web Mapping Application

- Hard to access and lack of data during the 1997 flood
- IJC's workshops and task force confirmed the need
- Many different organizations producing data in the Basin
- A geospatial data framework for the Red River Basin has been established
- Many non-savvy GIS people in the Basin

First Try

- First version of a web mapping tool was ArcView IMS
- Developed during first phase of the RRBDIN
- Expensive to maintain after ESRI dropped support for it
- Left with a decision to make during the second phase of development

Second Try, Do or Die

- Wanted a **seamless** web mapping tool to view GIS data in the Red River Basin
- Wanted it to satisfy many different GIS viewing needs
- Needed to be inexpensive and easy to maintain
- Wanted to use as many WMS and/or WFS as possible (Distributed Database concept)
- We choose to use MapServer

Challenges

- Data had to appear seamless
 - 2 Countries, 3 States and many local governments
- Easy to use interface
- What functionality do users need?
- How do we organize all of the data?
- How do we develop the application so it is easy to maintain?

BasinViewer Data Sources

- BasinViewer uses a collaboration of data sources.
 - FEMA – flood plains
 - USGS – imagery, land use, NHD
 - USACE – historic flood extents
 - EPA – Emergency response data
 - MnDNR – basemap data
 - Manitoba Conservation – basemap data
 - Environment Canada – basemap data
 - Many others – water quality, bridges

Technology, So Much to Choose From!



BasinViewer Technology

- Developed with MapServer 3.6
- Windows 2000 Server with IIS 5.0
- Interface developed using DHTML and JavaScript
 - Credit goes to Steve Lime's Dbox code
- Uses a combination of shapefiles and WMS layers
- No Server-side scripting was needed

Interface Decisions

- Java vs. DHTML vs. HTML
- Functionality (much is standard or code is available)
 - Zoom to menus, change map size, custom map, display mouse coordinates
- How to organize all of the content?
 - Adapted from MnDNR LandView Application
- Can be a time consuming process, mainly because of the freedom with MapServer

BasinViewer Interface Version 1

Red River Basin Decision Information Network - MapServer - Microsoft Internet Explorer

File Edit View Favorites Tools Help

RED RIVER BASIN
DECISION INFORMATION NETWORK
"Shared Tools For Regional Problem Solving"

Tools > BasinViewer Map Size: Small Zoom to Watershed... Search for Data via GeoGateway

Map Tools

- Zoom In
- Zoom Out
- Home
- Info
- Print
- Layers
- Java Enabled

Help Files

View Legend



Change Map Display Size

Changes Map Display to Extent Of Watershed Selected

Turn on/off GIS Layer...
Overlay

Water Features

- Rivers, Streams & Ditches

Watershed Boundaries

- Major Watersheds
- Minnesota (MnDNR)
- Manitoba (Manitoba Conservation)
- Canada (PFRA)

Transportation

- Secondary Hwy
- Local Rd/Street
- Minnesota Bridges **i**
- Minnesota Hydraulic Structures **i**
- North Dakota Bridges

Political Features

- Section Lines (U.S.)
- Civil Twp. (U.S.)

Flood & Water Management

- FEMA Q3 Data (U.S.)

Approx. Scale 1inch = 4,322,909 meters 0 27 54 81 108 mi

BasinViewer Interface Version 2

RED RIVER BASIN
DECISION INFORMATION NETWORK

"Shared Tools For Regional Problem Solving"

Turn on/off GIS Layer...

- Map Layers
 - Overlay Layers
 - Water Features
 - Watershed Boundaries
 - Transportation
 - Political Features
 - Flood & Water Management
 - Ecological
 - Water Quality
 - Emergency Response
 - Background Layers
 - Aerial Photos (MN)
 - USGS Topo Quads (MN)
 - Landuse/Landcover
 - Shaded Relief Image
 - Landsat7 Images

Refresh Map

Map Options

Map Size:

[Help Files](#)

[View Legend](#)

[Home Page](#)

Zoom to Watershed...

Zoom to Scale:

Zoom



0 27 54 81 108 mi

0 45 90 135 180 km

Overview Map



Web Mapping Services

- No data maintenance
- Without it we would be able to serve the USGS topo quads and aerial photos
- Only using it for raster layers
- BasinViewer uses two sources: USGS and MnDNR
- Hopefully we can add more in the future

Live Demonstration



MapServer Usage

Monthly Report

(Go To: [Top](#): [General Summary](#): [Monthly Report](#): [Daily Summary](#): [Hourly Summary](#): [Domain Report](#): [Organisation Report](#): [Browser Summary](#): [Operating System Report](#): [File Type Report](#): [Directory Report](#): [Request Report](#))

This report lists the activity in each month.

Each unit (—) represents 400 requests for pages or part thereof.

| month: | reqs: | pages: | bytes: |
|-----------|--------|--------|----------|
| -----: | -----: | -----: | -----: |
| Nov 2001: | 553: | 549: | 0: — |
| Dec 2001: | 993: | 989: | 0: — |
| Jan 2002: | 5984: | 5043: | 0: ————— |
| Feb 2002: | 4955: | 3955: | 0: ————— |
| Mar 2002: | 5313: | 3614: | 0: ————— |
| Apr 2002: | 4877: | 4022: | 0: ————— |
| May 2002: | 10671: | 8918: | 0: ————— |
| Jun 2002: | 9304: | 7736: | 0: ————— |
| Jul 2002: | 12335: | 10049: | 0: ————— |
| Aug 2002: | 8543: | 7082: | 0: ————— |
| Sep 2002: | 8921: | 7759: | 0: ————— |
| Oct 2002: | 10583: | 8611: | 0: ————— |
| Nov 2002: | 23272: | 12333: | 0: ————— |
| Dec 2002: | 13727: | 9909: | 0: ————— |
| Jan 2003: | 13732: | 9041: | 0: ————— |
| Feb 2003: | 17010: | 9823: | 0: ————— |
| Mar 2003: | 18069: | 11160: | 0: ————— |
| Apr 2003: | 3761: | 2429: | 0: — |

MapServer's has generated approximately 30,000 map components for the RRBDIN website in a period of one year.

Busiest month: Nov 2002 (12,333 requests for pages).

Wants and Wishes

- We would like to make a few enhancements to the interface
 - Notice to user when MapServer is processing a request
- Add additional support for printing custom maps
 - Ability to change map sizes
 - Print to .pdf
- Add additional GIS data
 - Specifically migrate to more WMS and WFS

Thank You MapServer Developers!

**Without MapServer, us average end users
would be stuck using an expensive
commercial software package.**

Presented By: Brian Fischer and Mark Deutschman, Ph.D., P.E.,
Houston Engineering, Inc.

bfischer@houstonengineeringinc.com

Homepage: <http://www.rrbdin.org/>

