

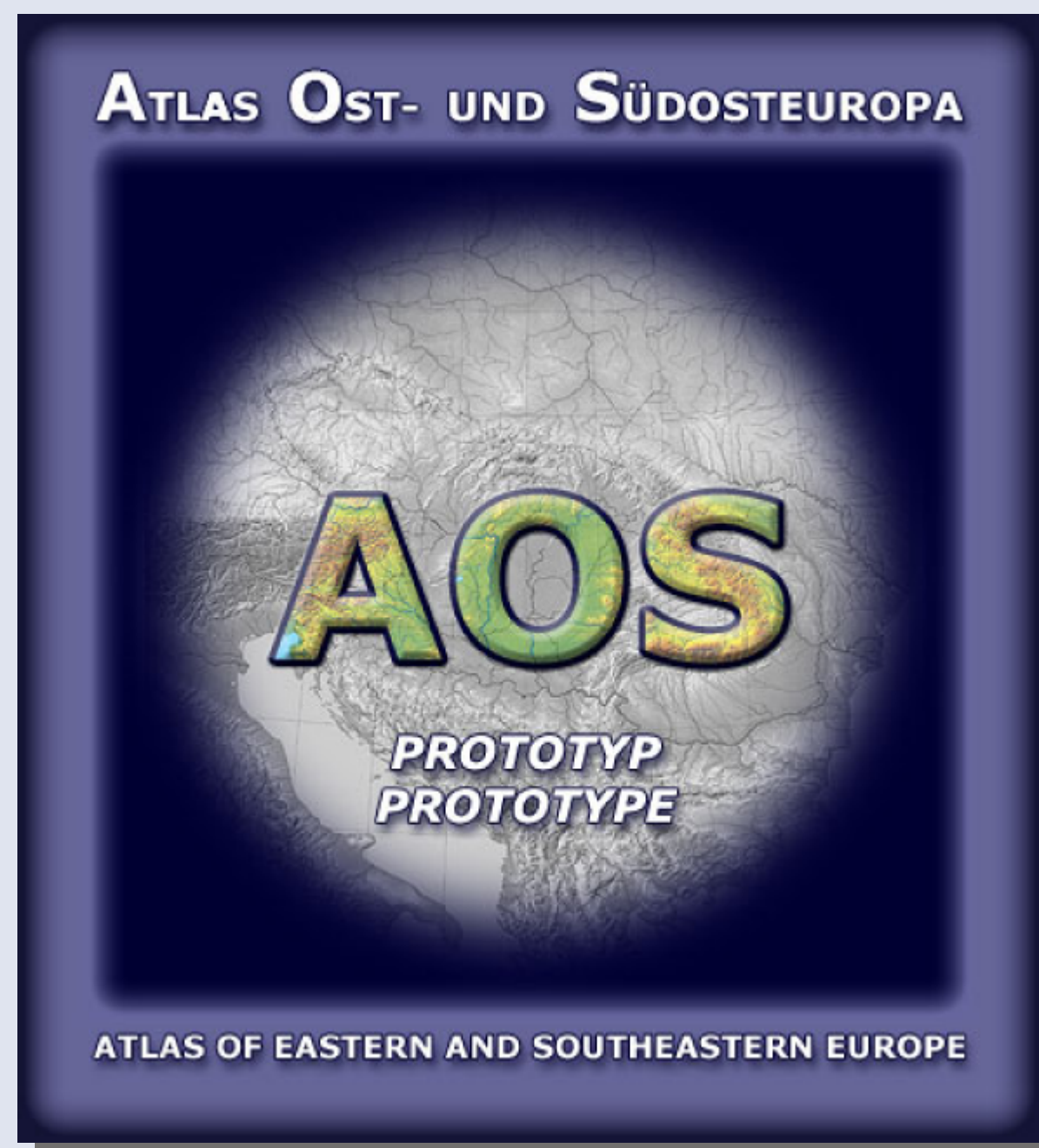
ATLAS OF EASTERN AND SOUTHEASTERN EUROPE

WEB-BASED SCIENTIFIC ATLAS OF A LARGER REGION

DEPARTMENT OF GEOGRAPHY AND REGIONAL RESEARCH, UNIVERSITY OF VIENNA
AUSTRIAN INSTITUTE OF EAST AND SOUTHEAST EUROPEAN STUDIES

<http://www.aos.ac.at>

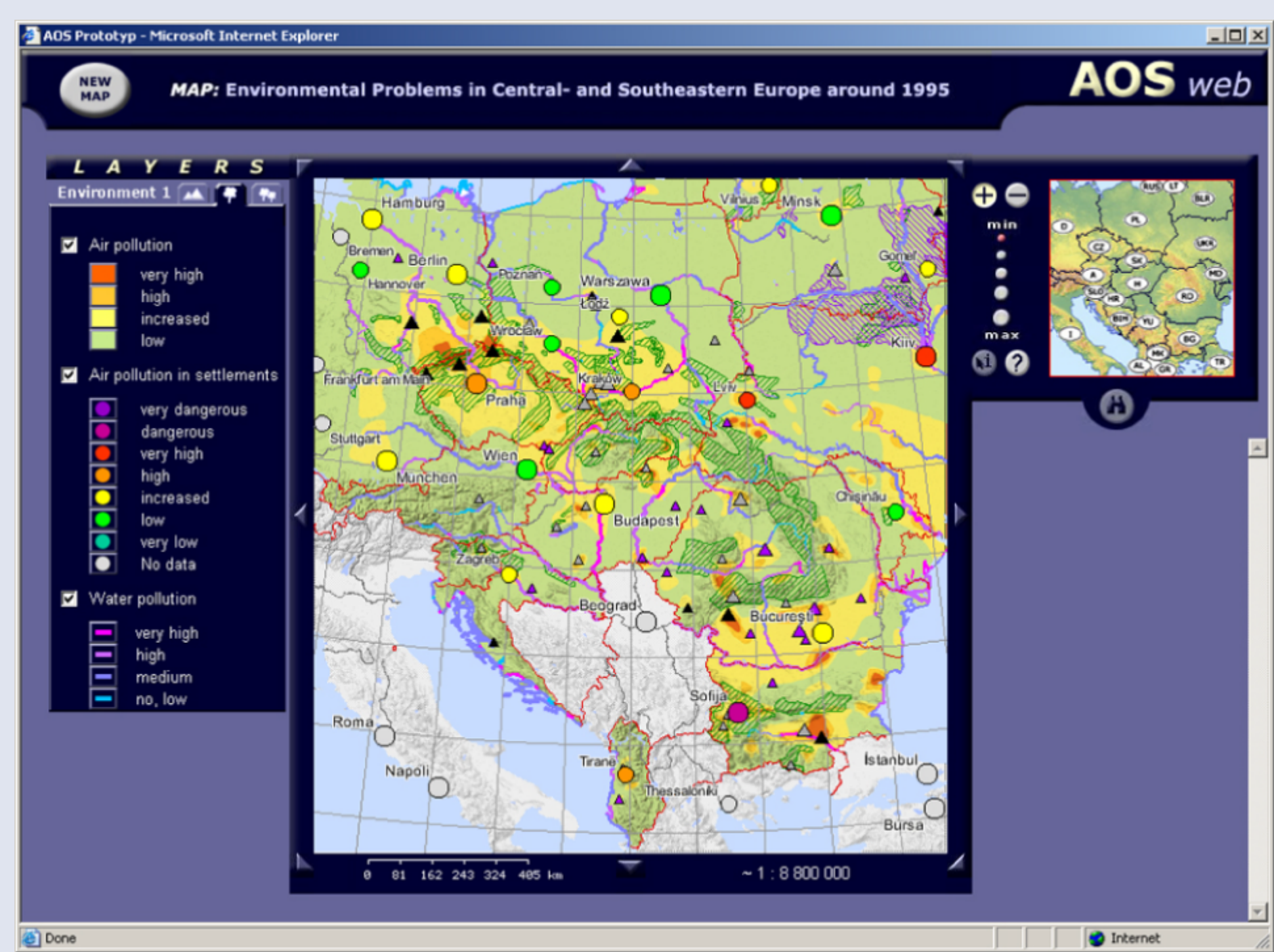
OVERVIEW



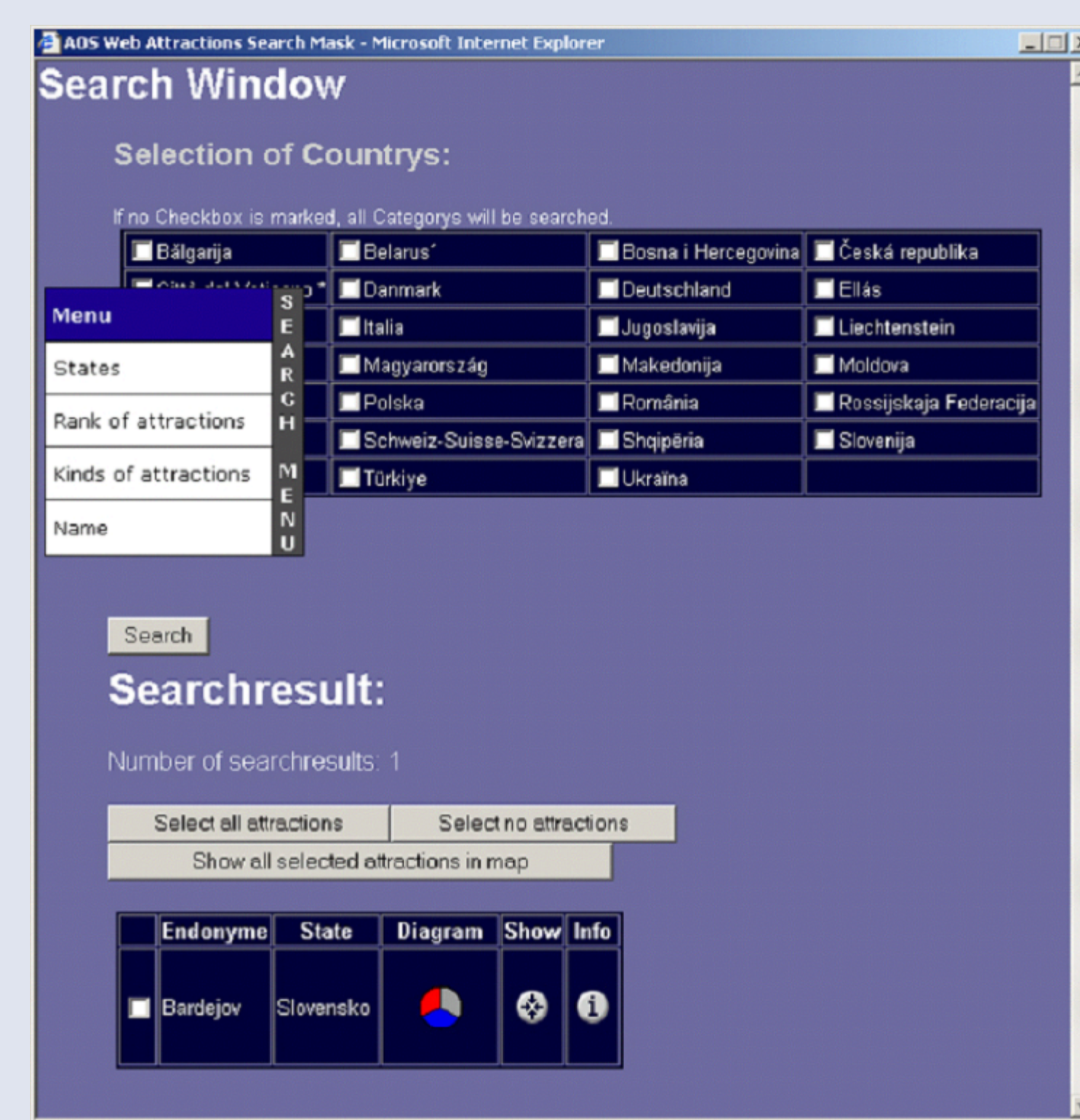
The Atlas of Eastern and Southeastern Europe is a scientific atlas of a larger region. Since 1989 up-to-date maps about ecology, population and economy are published in print. Between April 2000 and February 2002 a prototype of an Internet version of this atlas has been developed in cooperation between the Department of Geography and Regional Research of the University of Vienna and the Austrian Institute of East and Southeast European Studies. The atlas' specific demands - that arise from multi-nationality, multi-linguality and from high scientific claims - were satisfied through its open and modular design that was reached by means of open source software.

TOPIC

The aim of the atlas is to provide up-to-date information about the part of Europe that has been under communist rule until 1989. Since then, the development of a free market economy, of western democratic structures and the integration into the political structures of Europe are taking place. The information presented is in the form of thematic maps from the fields of ecology, economy and population. The main purpose of the atlas is to offer cross-regional comparisons by frame maps showing the complete region or larger parts of it in scales between 1:6.000.000 and 1:3.000.000. That distinguishes this atlas essentially from national or regional atlases especially in regard to the problems of data collection and cartographic as well as content visualisation.



AOS - Environmental Map



AOS - Search Functions



AOS - Map of Tourism

Utilising this digital atlas interactive access as well as permanent updating of available thematic data and maps is made possible. Beyond this, the connection to other spatial-oriented sources of information - related to the area of depiction - are integrated through hyperlinks.

